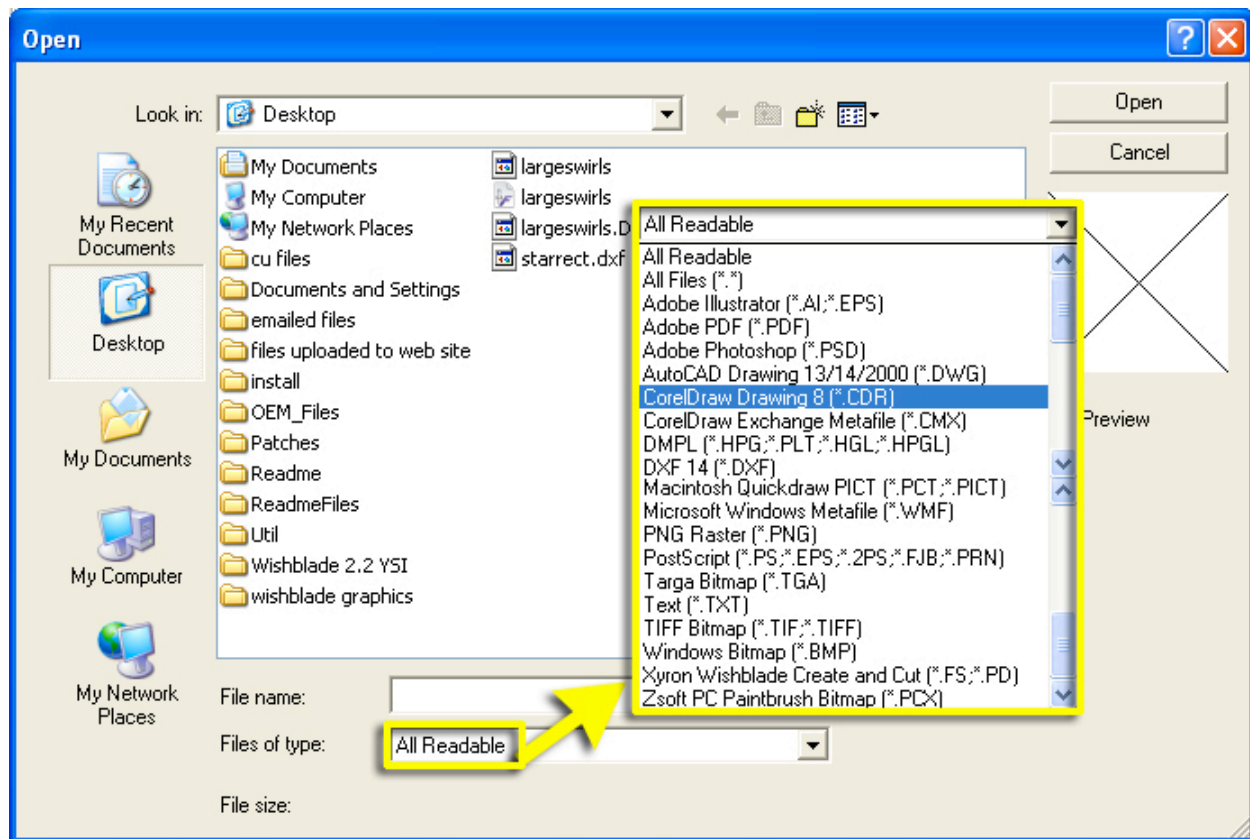


## Basic Operations

### Opening



Once you save your design saved as a Create and Cut document you can reopen it by selecting Open from the File Menu. The screen above shows the file types you can open in Xyron Create and Cut Plus. In the Files of Type drop down box select All Readable, or choose a specific file type. Browse to where your file is located and select Open. The file will appear on your Create and Cut workspace.

### Import

Import allows you to place a file directly into the project you have open. From the File Menu select Import. Select All Readable, or choose a specific file type. Browse to where your file is located and select Import. Click to place the imported file into the workspace. The file will now appear within your opened Create and Cut design.

### Export

To save a file, in a format other than Xyron Create and Cut Plus, choose the File Menu and select Export. Select the type of file format you wish to save as, type a File name, and select Export.

### Save

To save your document so you can open it at another time, from the File Menu select Save. Type the file name and select Save.