

Advanced Color Techniques

Create and Cut Plus allows you to use color to preview your designs. Coloring also allows you to break apart designs for the purpose of cutting. You can mix your own colors or import them from other applications and manufacturers. Searching by color allows you to find just the right look for your design.

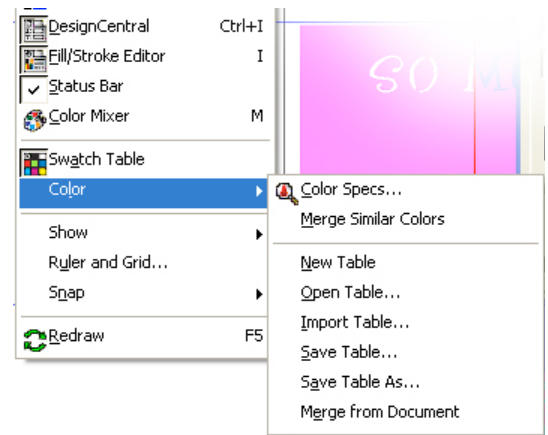
Note: Assigning colors similar to the paper/media used is helpful when cutting. It allows you to change the paper/media according to the color swatches shown in the Cut Plot Preview screen.

Color Options in Menus

View Menu – Color option

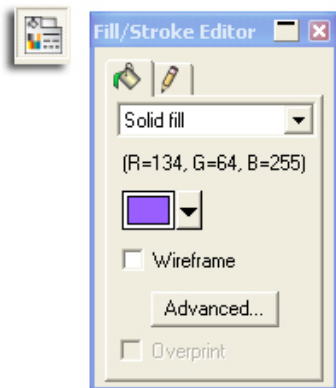
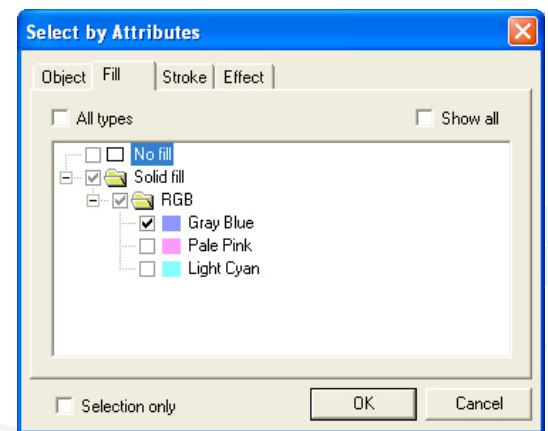
Through the View menu you can access the Color Mixer, Swatch Table and Color Specs Options. By selecting several objects with similar colors you can choose Merge Similar Colors and they will all become the same color.

Additionally, the View menu allows you to work with the swatch tables.



Edit Menu – Select Attribute

In complex designs it is helpful to use the select by attributes option to make changes to your document. Choose the Edit Menu and choose Select. Choose Select by Attribute

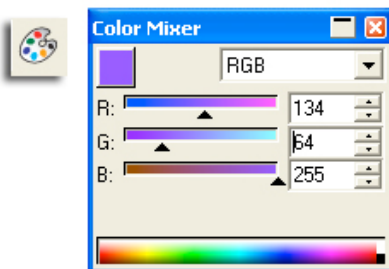


Choose the Color Fill Options or Stroke.

The Select by Attributes dialog lists all colors used in the design. Click the color check box to select all objects of that color.

Color Mixer

The Color Mixer allows you to mix a custom color and use it in your design. The Fill Editor Dialog also reflects the current used color; keep the Fill Stroke Editor Dialog loaded.



Select the type of color you wish to work with from the drop down list. RGB is selected. Move arrows on the slide bars until you mix your color. You can also click the color blend along the bottom. The color appears as a swatch in the upper left corner and in the Fill Stroke Editor.

Color Specs

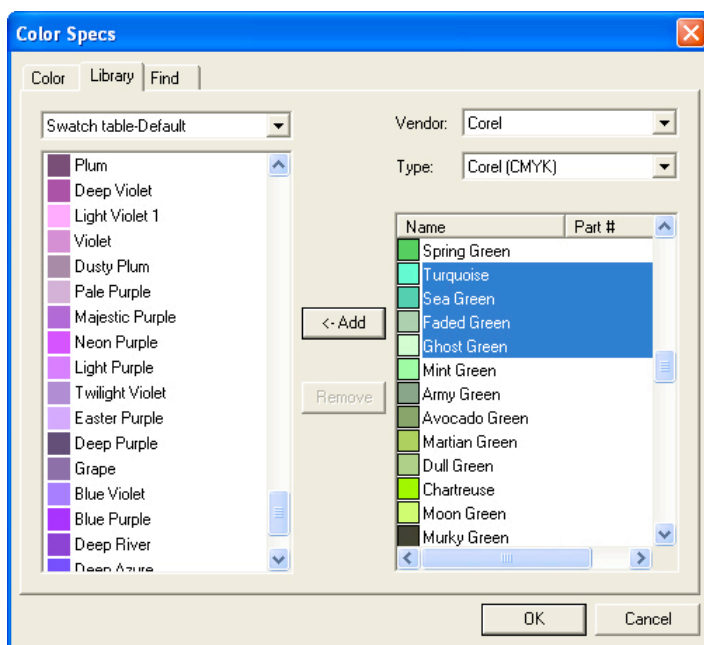
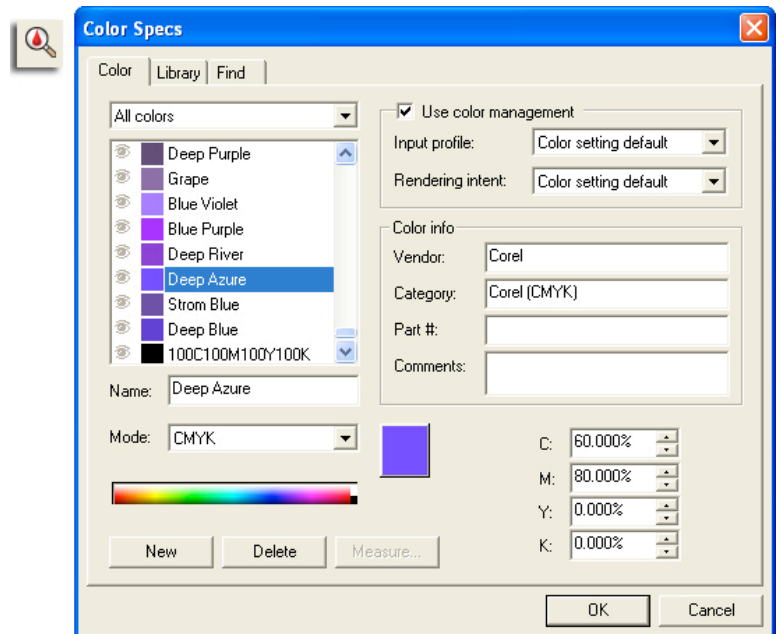
The Color Specs button in the standard toolbar brings up the Color Specs Dialog. The Dialog allows for advanced color management. The Dialog is broken up into 3 tabs: Color, Library, and Find.

Color Specs Color Tab

The Color tab shows the color of the selected object in your design. Information about the color is shown here. It shows you a swatch of colors and the other available colors. The colors name and the color mode are listed. You can click on another color from the list or mix another color from the blend bar to change the color of the selected object.

Additional information about the color is shown including how it is viewed and manufacturers information as well.

The bottom right corner shows the breakdown of color by Mode. For Example the percentages of Cyan, Magenta, Yellow and Black are shown here. If the color were an RGB color the breakdown would be Red, Green and Blue mode.



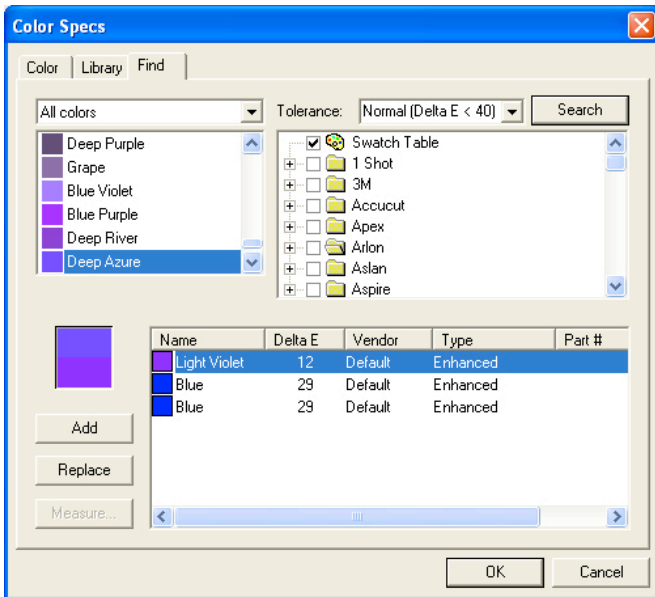
Color Specs Library Tab

The library tab allows you to add colors from other vendors. By clicking on Corel in the Vendor drop down menu all the colors used in Corel Applications such as Corel Draw are shown.

Click on an individual color or hold down the Shift key and click on multiple colors then choose the Add Button. This adds the colors to your documents color swatch and makes them available for use in your design.

You can also remove colors from the list by clicking on the colors in the Swatch table-Default list or other selected color mode from the drop down list and click the Remove button.

Color Specs Find Tab



The Find tab is a color search tool. The color of the object selected in your design shows in the top color swatch in the Find Tab. Clicking on the Search button will search the chosen manufactures for similar colors. The colors will appear in the list in the bottom right corner with information about the similar colors.

Choosing the Add button will add the color to your swatch table. The Replace button changes the selected objects color to the one selected.